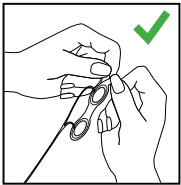


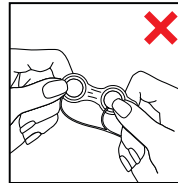
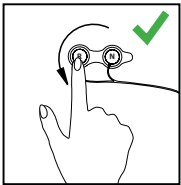
DO'S

DON'TS

1 Electrode Placement

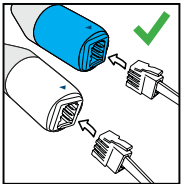


- Pull leads gently to adjust length
- Cut the paired electrodes, if needed
- Pull on the tab for easier removal
- When repositioning pairs, do so one at a time
- Prioritize R positioning for the R-N paired electrode

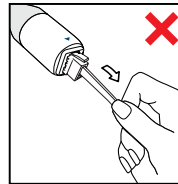


- Don't tear paired electrodes—this will damage the sensor
- Avoid yanking or pulling strongly when pulling leads apart
- Don't pull on only the leads when removing—wrap leads around hand
- Don't allow the release tab to fold over on to the gel

2 Cable Connection



- Align arrow to clip for connection
- Wrap leads around hand to remove easily
- Explain to the staff: Design prevents misconnection + defib recovery



- Avoid any tension on the leads
- Don't pull on only the leads when removing—wrap leads around hand
- Don't put the cable under the mattress. Patient movement can cause disconnection.

3 Equipment



- Check compatibility with equipment prior to placement




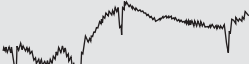


- Not MRI safe (connector has metal pins)

4 Procedures



- Train in-service with staff

| PROBLEM | LIKELY CAUSE | SOLUTION |
|---|---|--|
|  <p>NO SIGNAL</p> | <ul style="list-style-type: none"> • On All Leads Faulty cable • Faulty connection of cable to equipment • All Leads except V1-V6 Electrode delamination on V1-V6 lead • All Leads except I Electrode delamination on LF lead • All Leads except II Electrode delamination on L lead • All Leads except III Electrode delamination on R lead • Leadwire disconnection | <ul style="list-style-type: none"> • Change to backup cable • Check connection of cable to equipment • Check/re-attach electrode • Replace electrode |
|  <p>ECG TRACE DRIFT (BASELINE WANDER)</p> | <ul style="list-style-type: none"> • Electrode delamination • Patient Movement | <ul style="list-style-type: none"> • Check/re-attach electrode • Move electrodes away from arms/legs (muscles), as possible |
|  <p>ECG TRACE NOISE</p> | <ul style="list-style-type: none"> • Electrode delamination • Patient Movement • Noise from surrounding power sources • Muscle tremor | <ul style="list-style-type: none"> • Check/re-attach electrode • Move from arms/legs to body, if possible • Move power cords away from Claravue cables/leads • Adjust filter settings to reduce, may not be possible |
|  <p>MOTION ARTIFACT</p> | <ul style="list-style-type: none"> • Patient Movement • Electrode delamination • Interference from other equipment | <ul style="list-style-type: none"> • Move electrodes away from arms/legs (muscles), as possible • Check/re-attach electrode • Move ECG cable away from other equipment |
| <p>DELAMINATION</p> | <ul style="list-style-type: none"> • Diaphoretic • Cable pulling leads • Patient prep is not enough (e.g. hairy) | <ul style="list-style-type: none"> • Fix with surgical tape as needed (LF/V6 at risk due to placement) • Fix cables to bed and allow slack in leadwires • Conduct patient prep |
| <p>DIFFERENT ECG WAVEFORM VS INCUMBENT PRODUCT</p> | <ul style="list-style-type: none"> • Different placement position of electrodes • Different setting on equipment | <ul style="list-style-type: none"> • Apply same positioning of electrodes • Adjust monitor to increase/decrease ECG amplitude |